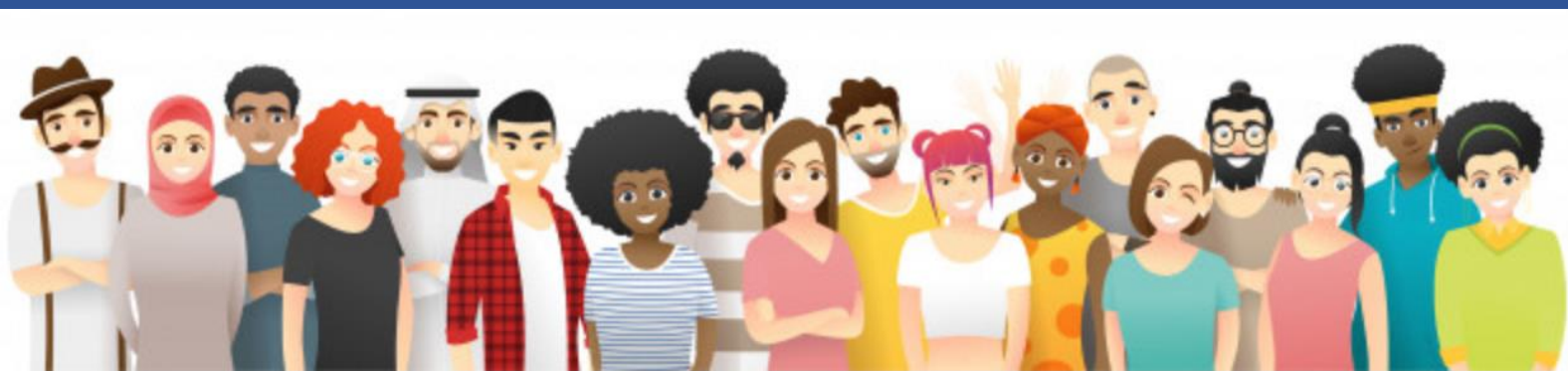


INForMHAA Patient and Public Involvement and Engagement (PPIE) Panel



Mental Health Act Assessment (MHAA)

- Are you over 18?
- Are you a Service User or carer who has been through the Mental Health Act assessment?
- Have you used spoken language/signed language interpreters for your MHAA?
- Do you want to share your experiences to shape future services?

If you have experience of being assessed under the Mental Health Act with or without an interpreter, we invite you to join the INForMHAA PPIE Panel.

GET INVOLVED!



For more information about the panel, or to get involved in the PPIE activities, contact Celia Hulme at:

celia.hulme@manchester.ac.uk

What is expected of me?

- Attend Panel member training online via Zoom (interpreters provided)
- Advise on project design
- Take part in data collection
- You must be comfortable working with a mixed culture/gender group
- You can be involved as little or as much as you like
- All work will be online

Benefits of joining INForMHAA panel

- Learn new skills
- Confidence building
- Meet new people
- Get paid for your time
- Make a change